



Apprenticeship



Appendix A – Work Process Schedule

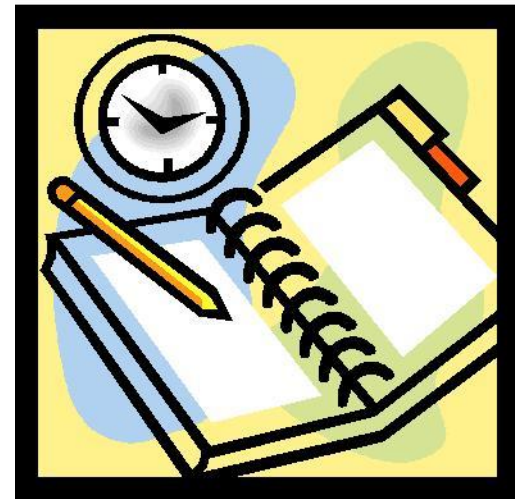
Overview of Chapter 4

- Overview
- Take a look at your Schedules
- Rework and finalize them
- Feel free to ask questions



Appendix A – Work Process Schedule

- It is the training outline for the occupation used by the employer
- Useful for the apprentice
- Defines the different aspects of the program including the OJT and Classroom Instruction



Page 1

- Occupation Name
- O*Net Code
- RAPIDS Code
- Term of the Occupation
- Ratio
 - Most of the time: 1 to 1
- Wage Schedule
 - Determined by the employer
 - Starting wage is above minimum wage
 - There must be a progression



Wages Progression Questions

- Required starting wage rate?
 - For OA, starting age must be at least minimum wage
- How many steps does an employer need to provide?
 - At least 1
- Are the rates determined by a local Union?
 - No...Unless what
- Required completion wage rate?
 - No
- My journey worker has been here 20 years, is that what my journey wage rate?
 - No
- In the end, who determines this wage progression?
- Other questions?



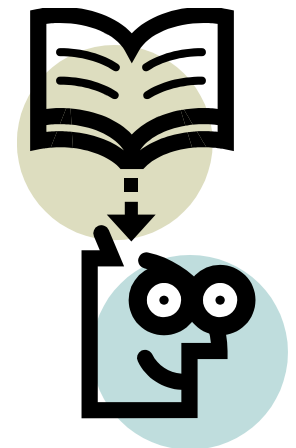
Work Process Schedule

- This is the very nucleus or foundation in which the apprenticeship is built
- The success of the apprenticeship is determined by:
 - The adequacy of the schedule
 - The diligence which it is adhered to
- Items to remember
 - Contain a sufficiently broad and all phases of the craft
 - Should reflect the training the employer intends on providing
 - Hours listed are estimated times which the average apprentice takes



Related Technical Instruction

- Again, 144 hours per year recommended
- Can be in the form of classroom (at high schools, technology centers, colleges, etc.), correspondence, distance learning, home study, online and/or provided by the sponsor
- Covers the theoretical and technical subject related to the trade
- Best is completed on a regular basis over the term of the apprenticeship



So let's make the Connection

- Any Questions?

Russell Davis

USDOL/Office of Apprenticeship

315 W. Allegan, Room 210

Lansing, MI 48933

(517) 377-1747

(517) 377-1517 (fax)

Davis.Russell@dol.gov

